

Turnstone



Elegant European Country Home with Side Family Entrance

Generous, open floor plan includes kitchen with walk-in pantry opening onto a beamed-ceiling living room, a large, light-filled breakfast nook and formal dining room. Main floor master bedroom suite; two upstairs bedrooms share an adjoining bathroom while another has its own private bathroom. Upstairs family room plus a unique bonus room above garage gives lots of casual relaxing space to everyone who needs it.

Total Living Area: 3438 sq. footage

Main Floor: 2104 sq. footage

Upper Floor: 1334 sq. footage + Bonus Room

Lower Floor: 0

Width: 84'

Depth: 72'

2 story

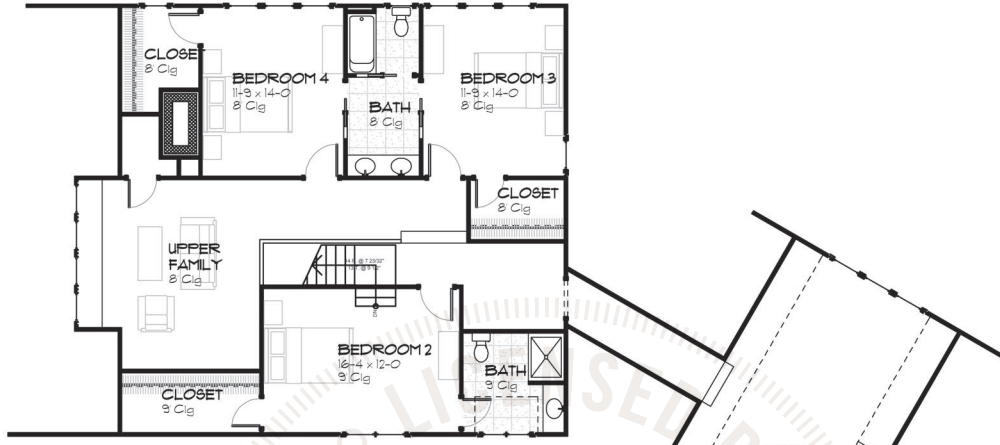
Bedrooms: 4

Main Floor Master Suite: Yes

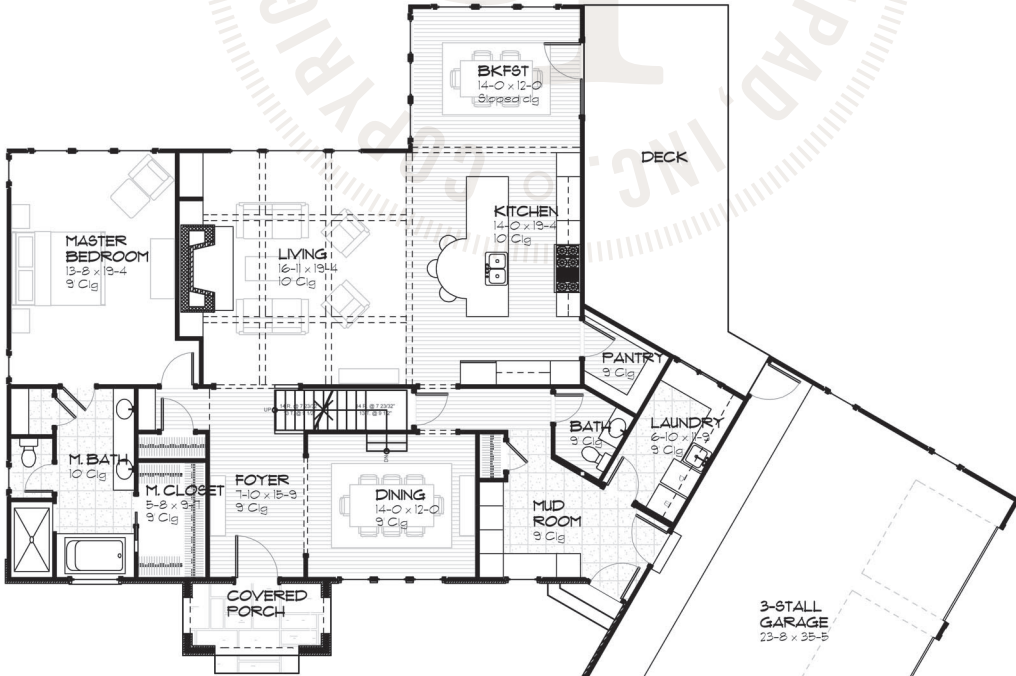
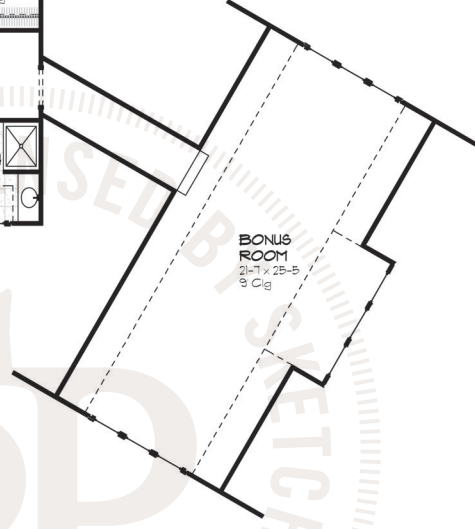
Bathrooms: 3.5

Garage: 3

Turnstone Floor Plans



UPPER FLOOR
1384 SQ FT + BONUS
© Copyright 2006, Licensed by Sketchpad Inc.



MAIN FLOOR
2104 SQ FT
© Copyright 2006, Licensed by Sketchpad Inc.

Turnstone Elevations



FRONT ELEVATION

1/8" = 1'-0"

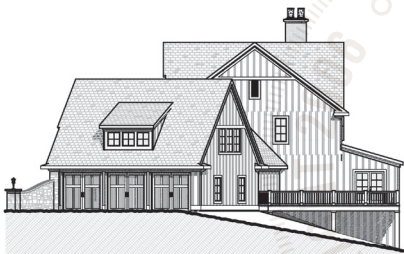
© Copyright 2006, Licensed by Sketchpad Inc.



REAR ELEVATION

1/8" = 1'-0"

© Copyright 2006, Licensed by Sketchpad Inc.



RIGHT ELEVATION

1/16" = 1'-0"

© Copyright 2006, Licensed by Sketchpad Inc.



LEFT ELEVATION

1/16" = 1'-0"

© Copyright 2006, Licensed by Sketchpad Inc.