

Spring Hill



Old World Cottage Style with Modern Walkout Level

Attractive flowerboxes and low, steep sloping roof lines make this unique cottage-style home warm and welcoming. Inside, there's every modern convenience, especially for anyone working from home full-time. This home office is secluded enough for you to truly leave work "in progress" until the next day. Casual floor plan design includes main floor master suite; lower floor has three additional bedrooms and two bathrooms, family room and a sizable wine cellar.

Total Living Area: 3397 sq. footage

Main Floor: 1928 sq. footage

Upper Floor: 0

Lower Floor: 1469 sq. footage

Width: 62'

Depth: 58'

1 story walkout

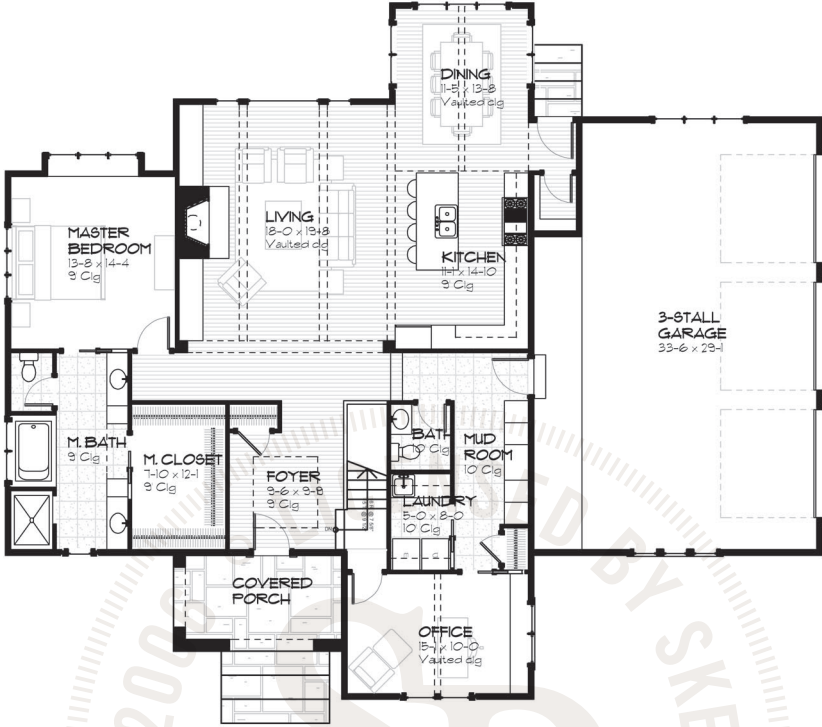
Bedrooms: 4

Main Floor Master Suite: Yes

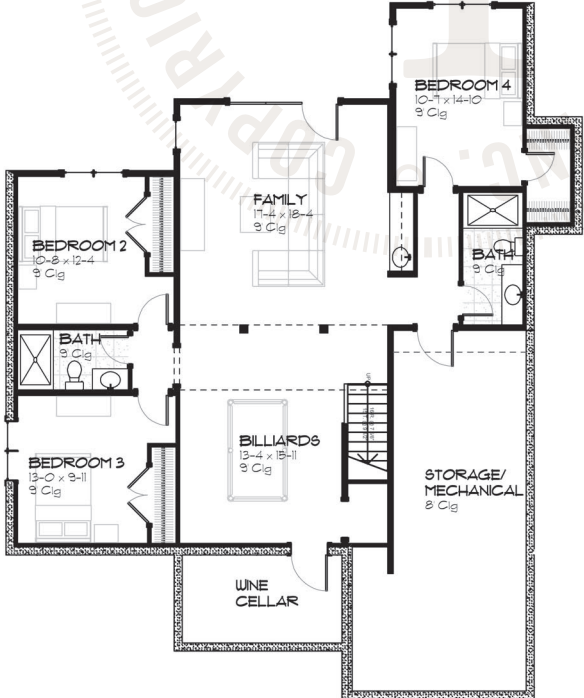
Bathrooms: 3.5

Garage: 3

Spring Hill Floor Plans



MAIN FLOOR
1328 SQ FT
© Copyright 2006. Licensed by Sketchpad Inc.



LOWER FLOOR
1469 SQ FT + WINE CELLAR
© Copyright 2006. Licensed by Sketchpad Inc.

Spring Hill Elevations



FRONT ELEVATION
1/8" = 1'-0"



REAR ELEVATION
1/8" = 1'-0"



RIGHT ELEVATION
1/16" = 1'-0"



LEFT ELEVATION
1/16" = 1'-0"