

San Lu Rae



Country French with Double-Loading Staircase

Across the back expanse of this dignified home you'll find a welcoming kitchen with an island and space for eating in along with a substantial family room and fireplace. Unique double-loading staircase allows access from front or back of house. A formal dining room at the front of the house offers a rarified atmosphere for special meals. The upstairs layout is designed to offer lots of privacy with a master suite (with his-and-hers walk-in closets), children's study, and three additional bedrooms. The fourth bedroom is over the garage for additional privacy and includes an en-suite bathroom.

Total Living Area: 3623 sq. footage

Main Floor: 1768 sq. footage

Upper Floor: 1855 sq. footage

Lower Floor: 0

Width: 88'

Depth: 36'

2 Story

Bedrooms: 4

Main Floor Master Suite: No

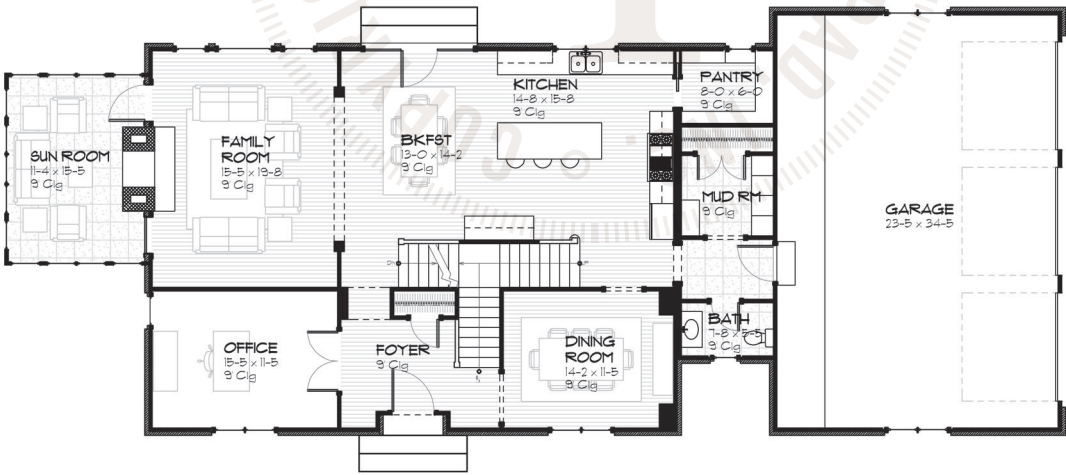
Bathrooms: 3.5

Garage: 3

San Lu Rae Floor Plans



UPPER FLOOR
1301 SQ FT
© Copyright 2006, Licensed by Sketchpad Inc.



MAIN FLOOR
1816 SQ FT
© Copyright 2006, Licensed by Sketchpad Inc.

San Lu Rae Elevations



FRONT ELEVATION
1/8" = 1'-0"



REAR ELEVATION
1/8" = 1'-0"



RIGHT ELEVATION
1/16" = 1'-0"



LEFT ELEVATION
1/16" = 1'-0"