

North Lake



Charming Craftsman Details, Casual Floor Plan

This home design includes a very private main floor master suite with full bath, walk-in shower and spacious walk-in closet. A 1½ story dormer shines light into the foyer and office; kitchen, dining and living rooms are open for easy, casual entertaining. Three bedrooms and two full upstairs baths give everyone their own space.

Total Living Area: 2609 sq. footage

Main Floor: 1773 sq. footage

Upper Floor : 836 sq. footage

Lower Floor: 0

Width: 70'

Depth: 50'

2 Story

Bedrooms: 4

Main Floor Master Suite: Yes

Bathrooms: 3.5

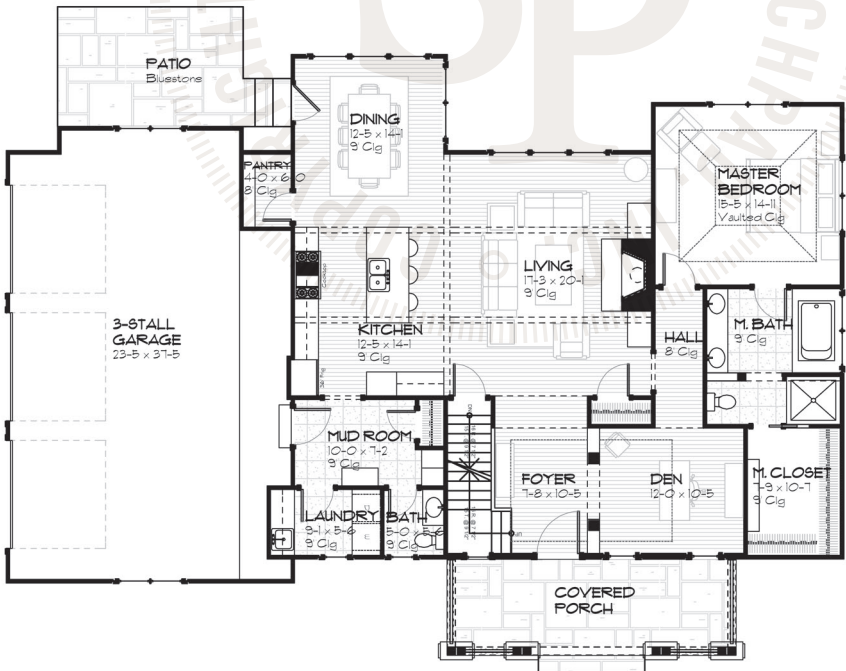
Garage: 3

North Lake Floor Plans



UPPER FLOOR

896 SQ FT
 © Copyright 2006, Licensed by Sketchpad Inc.



MAIN FLOOR

1113 SQ FT
 © Copyright 2006, Licensed by Sketchpad Inc.

North Lake Elevations



FRONT ELEVATION
1/8" = 1'-0"

© Copyright 2006, Licensed by Sketchpad Inc.



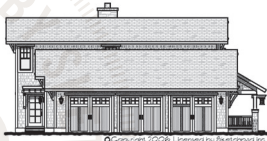
REAR ELEVATION
1/8" = 1'-0"

© Copyright 2006, Licensed by Sketchpad Inc.



RIGHT ELEVATION
1/16" = 1'-0"

© Copyright 2006, Licensed by Sketchpad Inc.



LEFT ELEVATION
1/16" = 1'-0"

© Copyright 2006, Licensed by Sketchpad Inc.